



# AUCTION

LEADING THE INDUSTRY SINCE 1945

THURSDAY – JUNE 1, 2017 – 11:00 AM

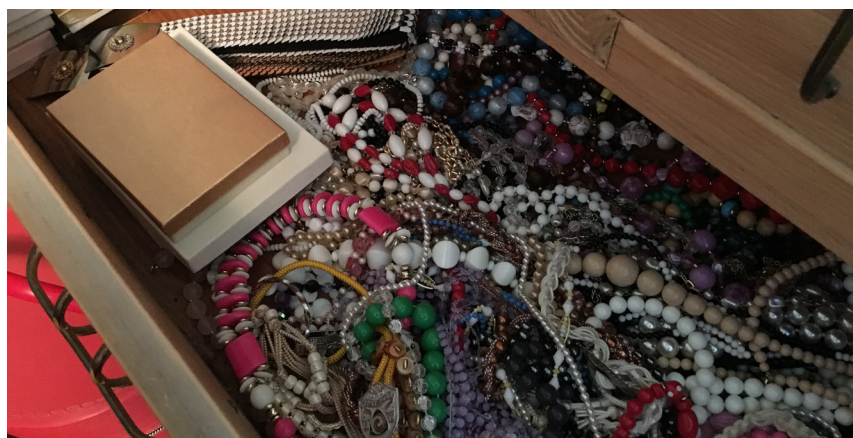
## Conner Estate

COSTUME JEWELRY – FURNITURE – GLASSWARE - RETRO PIECES – HOUSEHOLD

Absolute auction, all sells to the highest bidders on location:

**1219 E. HIGH ST., LOUISVILLE, OH 44641**

**Directions:** Take SR 153 east of SR 44 to Nickleplate then go south to High St. and east to address. Watch for KIKO signs.



**JEWELRY – GLASSWARE – FURNITURE:** Loads of costume rings, necklaces, bracelets, earrings, etc. – Lighters – Jewelry boxes – Early fans – Rogers flatware – Carnival mixing bowls – China service – Quilts – Lighting – Horse collectibles – Early girls Schwinn bicycle – Milk glass – Retro chairs – Clean recliners – Lamp tables – Shadow mirror – Pattern glass – Set of iridescent carnival glass – Wardrobe cabinet – Early hair dresser's station & chairs – Buffet – Armchair rocker – Loads of paperback books – Bedroom furniture – Sewing cabinet – Cedar blanket chest – Dining table & chairs – China cabinet – Good Toro push mower – Hand tools – Thatcher.

**TERMS ON CHATELS:** Driver's license or State ID required to register for bidder number. Cash, Check, Debit Card, Visa, or MasterCard accepted. 4% buyer's premium on all sales, 4% waived for cash or check. Information is believed to be accurate but not guaranteed.

**AUCTION BY ORDER OF:** Myra Keck

**AUCTIONEER/REALTOR:** George Kiko, 330-418-1095

**APPRENTICE AUCTIONEER:** Seth Slagle



Information is believed to be accurate but not guaranteed.



**330.455.9357 • kikoauctions.com**

